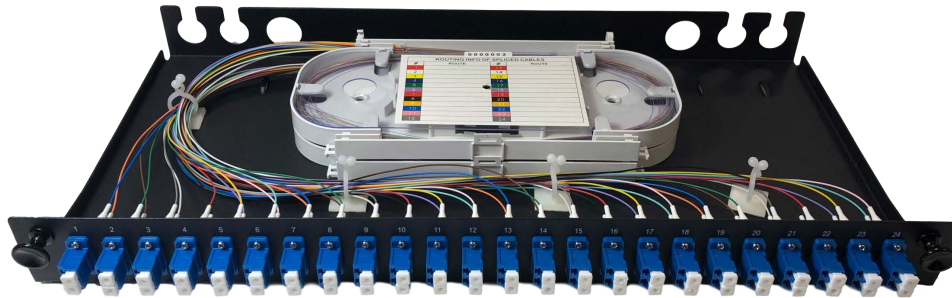


## Loaded Fibre Patch Panel



Our standard 1U 19" loaded fibre optic patch panel has been designed to save engineers up to 45 minutes preparation time per panel.

### Features and Benefits:

- Delivered fully loaded
- Colour coded pigtails
- Dressed and supplied with 2m of 250um fibre in the tray ready to splice
- Batch coded cassette and pigtails, supplied with individual test results
- Scratch resistant black powder coating finish
- Can save up to 45 minutes preparation per panel
- Our bend insensitive pigtails are configured to match the colour of cables manufactured to TIA standard

The tray fixes into the lid by means of plastic push clips which are easily released when access is required. When the panel is fixed in to an equipment cabinet or rack the tray can be fully extended and is supported by the lid to allow hands free access to the fibre terminations. The base of the tray has four fixing points for cable ties. For identification, the tray has numbered adapter ports.

Standard 1U panels are loaded with adapters to suit customer needs. Depending on style of connection, panels can be configured to accommodate up to 96 fibres. Any unused adapter ports will be blanked off.

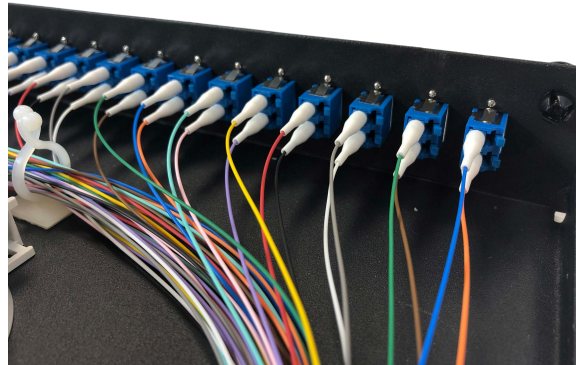
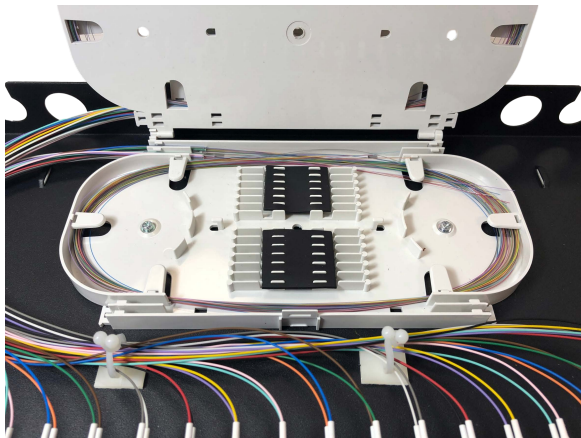
The lid of the panel has been strengthened with bends front and rear which stop it from bowing in the middle. The mounting ears are movable so the panel can be set up to be recessed within the cabinet to allow a better bend radius for patch cords.

Cable access is through a choice of six inputs on the rear of the panel, two suitable for PG16 gland (up to 15mm cable diameter) and four are suitable for PG11 gland (up to 10mm cable diameter). Four of the cable entries have a 'U' cut out allowing pre-terminated cables to be easily installed into the patch panel.

Panels are individually packed in pizza style boxes and are supplied with an accessory kit comprising:

- 1 x PG16 gland
- 2 x PG11 gland
- 3 x blanking plugs
- 4 x curly lok with self-adhesive base
- 4 x cage nut, screw and cup washer





## Patch Panel Specification

<u>Dimensions</u>	
Width	432mm
Depth	206mm
Height	44mm
Weight	2.3kgs
Material	Steel
Lid Thickness	1.5mm nominal
Tray Thickness	1.2mm nominal

## Pigtail Specification

<u>Optical Performance</u>	<u>SM</u>	<u>MM</u>
Insertion Loss	0.3dB	0.3dB
Typical	0.25dB	0.2dB
Return Loss (greater than)	-50dB	-20dB